

PLEASE CHECK WWW.MOLEX.COM FOR LATEST PART INFORMATION

Part Number:

0039281043

Status:

Active

Overview:

Mini-Fit Family Power Connectors

Description:

Mini-Fit Jr. Vertical Header, 4.20mm Pitch, Dual Row, 4 Circuits, without Snap-in Plastic Peg PCB Lock, Tin, Natural

Documents:

- Drawing (PDF)

Packaging Specification PK-5566-000 (PDF)
- 3D Model (PDF)

Packaging Specification PK-5566-003-001 (PDF)
- 3D Model

Test Summary TS-5556-002-001 (PDF)
- Product Specification PS-5556-001-001 (PDF)

RoHS Certificate of Compliance (PDF)
- Application Specification AS-5557-001-001 (PDF)

Agency Certification

CSA

LR19980

UL

E29179

General

Product Family

PCB Headers

Series

5566

Application

Power, Wire-to-Board

Comments

The 5566 header should be used with standard Mini-Fit female terminals. If increased amperage of up to 13A per circuit is needed, please consider using the Mini-Fit Plus HCS family 45750 terminals with 46015 headers; See Molex Product specification PS-5666-001 for current de-rating information.

Component Type

PCB Header

Overview

Mini-Fit Family Power Connectors

Product Name

Mini-Fit Jr.

Taxonomy

PCB Headers and Receptacles

UPC

800753581838

Physical

Breakaway

No

Circuits (Loaded)

4

Circuits (maximum)

4

Color - Resin

Natural

Durability (mating cycles max)

30

First Mate / Last Break

No

Flammability

94V-2

Glow-Wire Capable

No

Guide to Mating Part

No

Keying to Mating Part

None

Lock to Mating Part

Yes

Material - Metal

Brass

Material - Plating Mating

Tin

Material - Plating Termination

Tin

Material - Resin

Nylon

Net Weight

0.951/g

Number of Rows

2

Orientation

Vertical

PC Tail Length

3.50mm

PCB Locator

Yes

PCB Retention

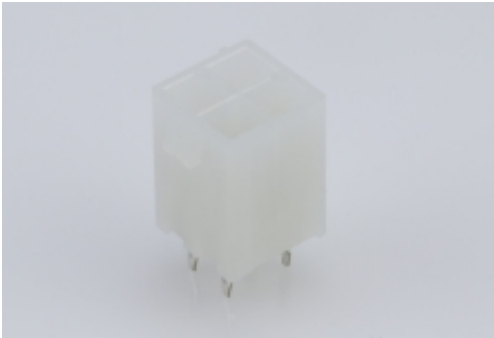
None

PCB Thickness - Recommended

1.60mm

Packaging Type

Bag



Series image - Reference only

EU ELV

Not Relevant

EU RoHS

Compliant

China RoHS

REACH SVHC

Not Contained per -
D(2022)9120-DC (17
Jan 2023)

Halogen-Free

Status

Low-Halogen

For more information, please visit [Contact US](#)

China ROHS

Green Image

ELV

Not Relevant

RoHS Phthalates

Not Contained

Search Parts in this Series

5566 Series

Mates With

Mini-Fit Jr. Receptacle Housing [5557](#)

Mini-Fit Jr. TPA Cable Assembly [45135](#)

Mini-Fit Jr. Cable Assembly [245135](#) ,
Mini-Fit TPA2 Receptacle Housing [172708](#)

Pitch - Mating Interface	4.20mm
Pitch - Termination Interface	4.20mm
Plating min - Mating	0.889µm
Plating min - Termination	0.889µm
Polarized to Mating Part	Yes
Polarized to PCB	Yes
Shrouded	Fully
Stackable	No
Surface Mount Compatible (SMC)	No
Temperature Range - Operating	-40° to +105°C
Termination Interface: Style	Through Hole
Electrical	
Current - Maximum per Contact	9.0A
Voltage - Maximum	600V
Solder Process Data	
Duration at Max. Process Temperature (seconds)	005
Lead-freeProcess Capability	WAVE
Max. Cycles at Max. Process Temperature	001
Process Temperature max. C	240
Material Info	
Engineering Number	5566-04A
Reference - Drawing Numbers	
Application Specification	AS-5557-001-001
Packaging Specification	PK-5566-000, PK-5566-003-001
Product Specification	PS-5556-001-001
Sales Drawing	SD-5566-002-000
Test Summary	TS-5556-002-001

This document was generated on 03/17/2023

PLEASE CHECK WWW.MOLEX.COM FOR LATEST PART INFORMATION